

Wpt central isolation provision
Thrybergh Sports Centre,

Contents

03 Introduction

04 Provision Aims

06 Isolation Staf

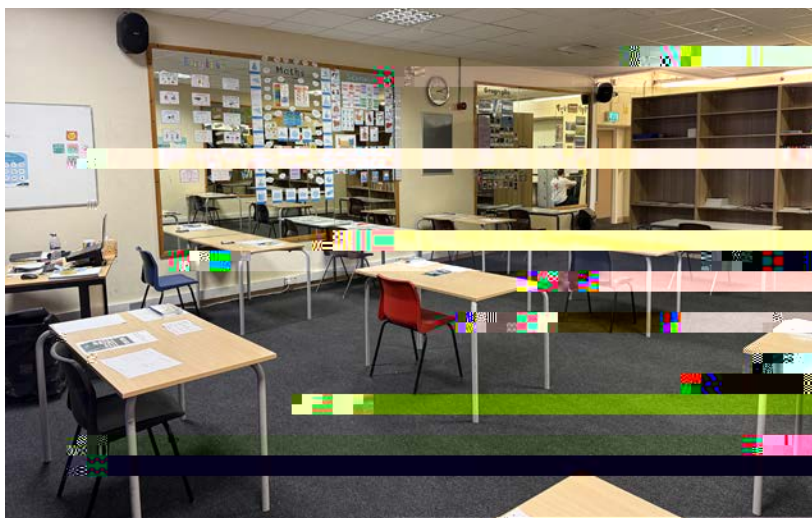
07 What to Expect

Central Isolation Provision

The WPT Central Isolation Provision is located at Thrybergh Sports Centre, which is adjacent to Thrybergh Academy.

It is important to note that this facility operates independently of the school, featuring its own separate entrance for access.

This arrangement ensures that the isolation provision can be accessed from the school grounds.





Key objectives of such provisions often include:

1. Behavioural Support

behaviour and learn coping strategies in a structured environment.

2. Personalised Learning

Providing tailored educational support to meet individual student needs, helping them catch up on missed work or continue their studies.

3. Social and Emotional Development

Supporting students to develop social skills, emotional resilience, and strategies to reintegrate successfully back into the mainstream setting.

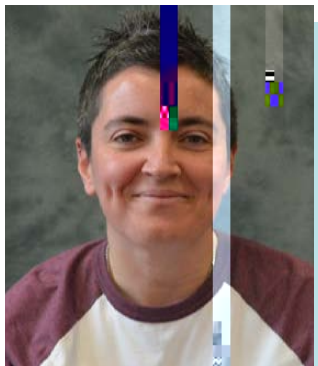
4. Safety

Ensuring that both the isolated student and the larger school community are safe by managing behaviours that may be disruptive or harmful.

5. Reintegration

Facilitating a smooth transition back to the main school environment, ensuring that students are equipped and ready to succeed.

Isolation Staf



Mrs M Atkin

Senior Isolation Manager for Wickersley Partnership Trust



Mr J Turner

Teaching Assistant for Isolation

What to Expect

On arrival at the Provision, students will be required to place their belongings (including mobile phone) into an individual locker. This is to ensure that all possessions are end of the day.

Students should work quietly and independently, where possible on tasks provided either by their class teachers or platforms so students can access revision, homework, coursework and additional learning.

The room is separated into 2 areas, described as follows:

Short Term Isolation Room

This is the larger area of the room and caters for a maximum of 12 students (3 per school). It is designed for students who require a period of 1 -3 days isolation.

Longer Term Isolation Room

This room is set in the smaller section of the room, and it is for a maximum of 4 students (1 per school). It is designed for students who need a longer period of isolation away from their school setting.

Intervention Room

The Intervention room is a space where we can tailor

by schools. This is in a separate area so as to ensure that students are free to speak without being overheard by others.



WICKERSLEY
PARTNERSHIP
TRUST.